



LASER TABLE

LS900



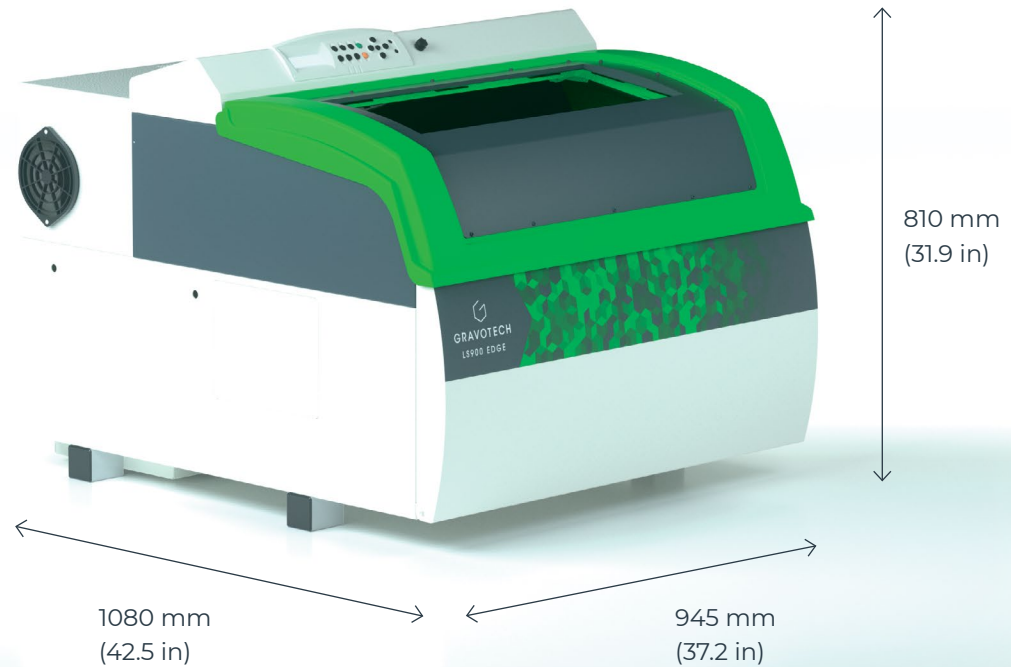
GRAVOTECH

by  **BRADY**



LASER TABLE LS900

The LS900 industrial laser engraver, CO2, Fiber, or Edge (dual sources), are ideal for high speed marking and cutting of medium and large format media.



LARGE FORMAT

It is the unique engraving surface on the market that allows you not only to work with standard semi-full sheets (24" x 24" - 610 x 610mm) but also take advantage of the 250mm (9,8 in) height z-axis making bulky objects easier than ever.

The working space becomes even easier thanks to the pass-through, the smallest machine on the market to feature this, making this ideal for both individual projects and even small batch work, with most objects able to fit, it becomes a question not of can I mark it, but when I mark it.

HIGH-SPEED LASER ENGRAVER

Taking advantage of our long history with industrial laser engravers we bring that technology to you with the LS900 range engraving up to 4m/sec which makes it a major asset to improve your productivity. With a choice between step motors or brushless motor, you can find a tailored solution for your projects and needs, keeping productivity at the forefront of your workflow.

The decision, unique for laser stations, let you prioritize depending on your budget and speed requirements.

UNLIMITED POSSIBILITIES

Mark and cut anything with the choice of laser source: Fiber for metals, CO2 for organics and minerals or edge, combining Fiber and CO2 technologies. Use a UV printer to add colors to your creations then let the LS900 cut them automatically thanks to the Print & Cut feature, which comes as standard, to create colorful signage and personalized gifts.

SEE OUR VIDEO



The large laser engraver that can do everything

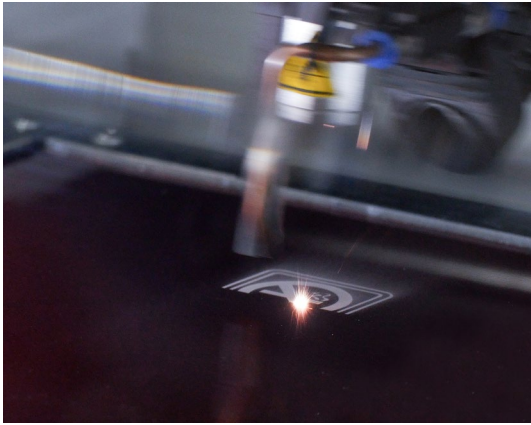
KEY FEATURES



Our dual sources CO2 Fiber laser machine

Increase your productivity by adopting Edge technology to engrave metals, wood, leather, most plastics or even all of them in just one cycle!

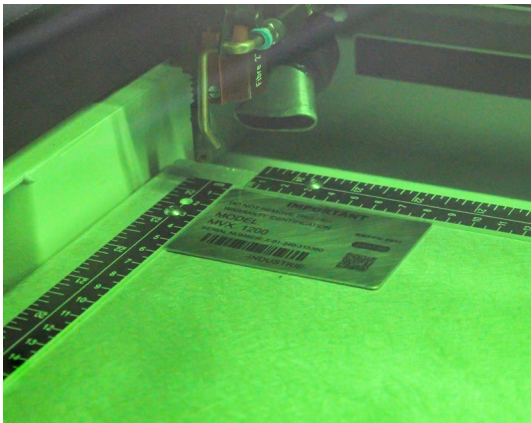
Select the materials easily in Gravostyle software, LS900 EDGE automatically switches from one source to the other when engraving or cutting.



LS900XP High speed CO2 laser engraver

This high productivity CO2 laser is perfect for demanding engraving and cutting applications.

These laser engravers are great for acrylic laser cutting, and perfect to engrave and cut a large choice of materials: wood, leather, paper, cardboard, plastic, glass, rubber, marble, stone, granite, foam, and many more!



LS900 Fiber laser engraver for metal

LS900 Fiber laser engraver is perfect for engraving directly onto a large range of metal and some plastics (Gravoply Ultra, Acrylic, ABS, etc.) parts and plates without using marking spray with precision and contrast that is guaranteed on all your workpieces.

From batch identification plates to individual industrial parts the LS900 Fiber makes it simple with the possibility of providing serial numbers made in the software and the large work area and passthrough, making those difficult to fit parts a thing of the past.

LEARN MORE ABOUT THE LS900



SOFTWARE

GRAVOSTYLE™



Expert software made by engravers for engravers

Gravostyle™ is a professional engraving and cutting software that puts Gravotech engraving expertise in reach. Benefit from advanced possibilities and save time! Unique features available: Braille, Photostyle, Print & Cut, and more.

Complete engraving process mastered

Due to our history of making engraving machines, we have a full understanding of the engraving process. Gravostyle™ is fully compatible with all of our technologies. The software/machine interaction streamlines and improves your day-to-day engravings with functions like Point & Shoot.

Gravostyle™: unique software for laser and rotary

Are you already using Gravostyle™ on your rotary machine, and expanding your business with a laser? No need to learn how to use another software, switch in one click on the Gravostyle™ interface to set-up laser engraving!

SERVICE & SUPPORT



Training

Our training modules are designed to optimize your use of our solutions and are available for our full range of machines, software and accessories.



Technical support

We bring you local support in your language in more than 50 countries, where we have established presence directly and with our distribution partners.



Maintenance

Thanks to experience gathered with Gravograph and Technifor and our global presence in more than 50 countries with 150 Gravotech technicians and our distributor partners, we can offer you a wide range of services.

APPLICATIONS



Funeral plaques and headstones engraving



Engraving & laser cutting of custom ink stamps



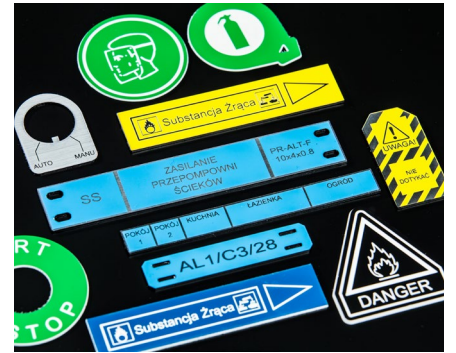
Pet and dog tags engraving



POP displays and sign engraving



Express Engraver



ID Tags

MATERIAL CHARACTERISTICS

Technology		CO2	FIBER	EDGE
Materials	Steel, stainless steel		●	●
	Aluminum		●	●
	Anodized aluminum	●	●	●
	Other metals		●	●
	Plastics	◐◑	●	◐◑◒
	Glass, crystal	●		●
	Wood, varnished wood, MDF	◐◑◒		◐◑◒
	Leather	◐◑◒		◐◑◒
	Textiles	◐◑		◐◑
	Paper, cardboard, cork	◐◑		◐◑
	Engraving materials	◐◑◒	●	◐◑◒

◐◑ = Cutting ◒ = Engraving/Deep marking ● = Marking/Etching

MAKE YOUR SAMPLES



TECHNICAL DATA

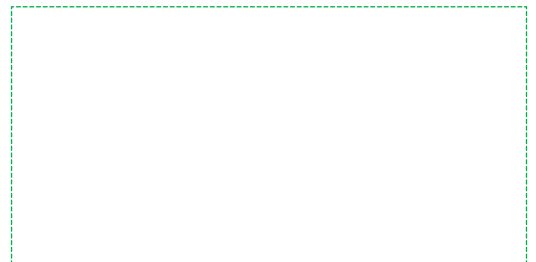
	LS900 CO2	LS900 FIBER	LS900 EDGE
Laser source	CO2	Fiber	Edge
Available power version	40 W - 60 W - 80 W	20 W - 30 W - 50 W	Fiber laser: 20 W - 30 W - 50 W CO2: 40 W
Available lenses	1.5" - 2.0" - 2.5" - 3.5" - 4.0"	2.0" - 3.0" - 4.0"	3.0"
Marking area max		610 x 610 mm (24 x 24 in)	
Max object height		250 mm (9.8 in)	
Max object weight		25 kg (55 lbs)	
Machine dimensions (L x W x H)		945 x 1080 x 810 mm (37.2 x 42.5 x 31.9 in)	
Machine weight	170 kg (374.8 lbs)	160 kg (352.7 lbs)	180 kg (396.8 lbs)
Z axis auto		250 mm (9.84 in)	
Noise	≤ 72		≤ 70
Point & shoot		Yes	
Operating temperature		10 °C (50 °F) - 35 °C (95 °F)	
Connection to computer		USB	
Maximum speed	up to 4000 mm/s (157.48 in/s)		up to 1500 mm (59.05 in)/s
Classification	CDRH: Class 2		CDRH: Class 2M (Pass-through: Class 4)
Beam diameter		0.1 to 0.4 mm (0,004 x 0,016 in)	



sales.au@gravotech.com
 +61 29 684 2400
www.gravotech.com.au

GRAVOTECH AUSTRALIA PTY LTD
 2 Bellevue Circuit,
 Greystanes, NSW 2145
 Australia

Distributed by:



Follow us:



gravotech.off



Gravotech Group



Gravotech



Gravotech - Gravograph