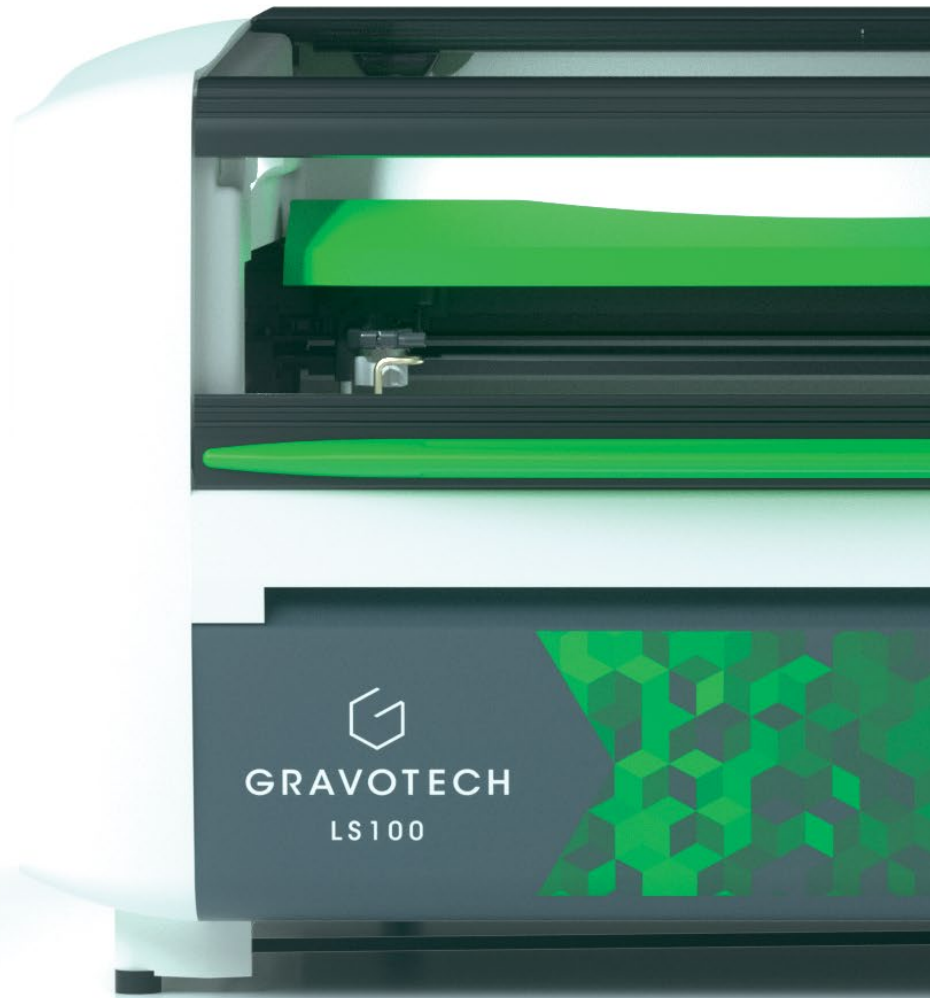




LASER TABLE

LS100

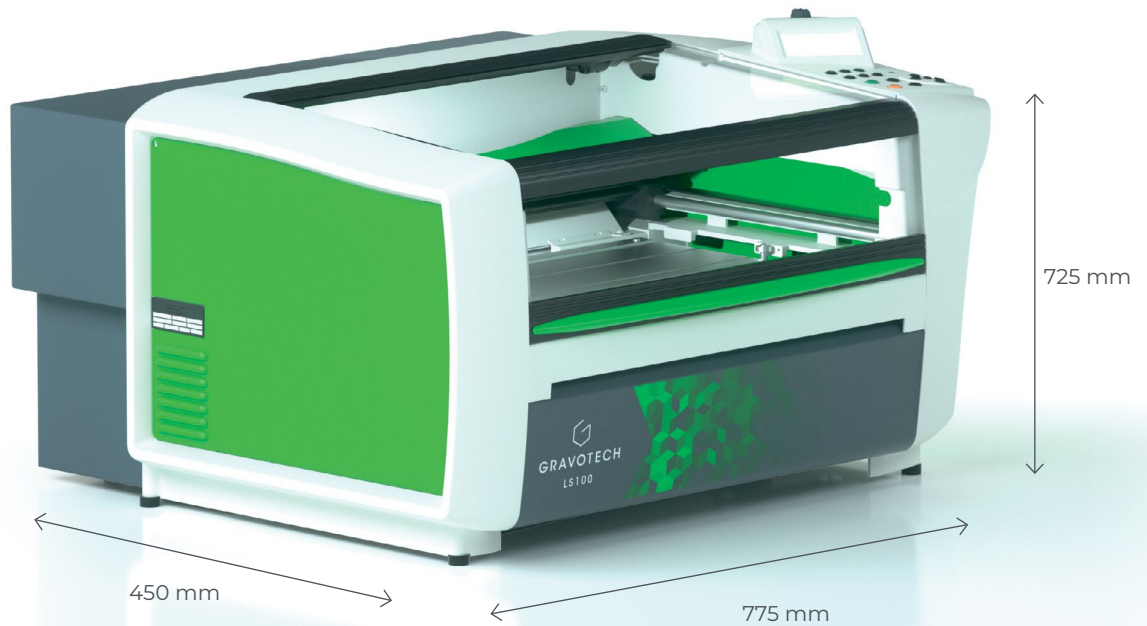


GRAVOTECH
EXPRESSION OF THINGS



LASER TABLE LS100

The LS100 is an easy to operate and compact laser engraver to cut and mark a wide range of materials. With its premium build, low maintenance and dedicated software, this small laser etching machine is the solution to be trusted for any application.



SINGLE WORK ENVIRONMENT

LS100 is a premium solution, it is the only gantry laser on the market made of one-piece aluminum chassis, that includes multi-technology professional CAD/CAM software and an RF laser source.

THE SWISS ARMY KNIFE OF LASERS

LS100 is a silent and compact laser engraver adaptable to industrial, commercial and office settings. Engrave glass, create plastic labels, shape acrylic, wood, cut, mark, and define folding lines on paper: this laser cutting and engraving machine can adapt to your every need.

EASY WORKFLOW

One by one or by batches, the LS100 improves your productivity thanks to time-savings features: automatic touch sensing, embedded control dashboard and backlit marking table with a wide front-loading door.

SEE OUR VIDEO



CO2 laser engraver for signage, creative cutting, and personalization.

KEY FEATURES



Smart Laser Engraver

The LS100 is automated, silent and space-efficient.

No bulky and loud separate blower or compressor, the exhaust and air assist are integrated and triggered automatically.

Place the items into the well-lit cabinet and front-loading door and let the laser detect their height for accurate positioning.

All lasering parameters are saved in a material library for increased productivity.

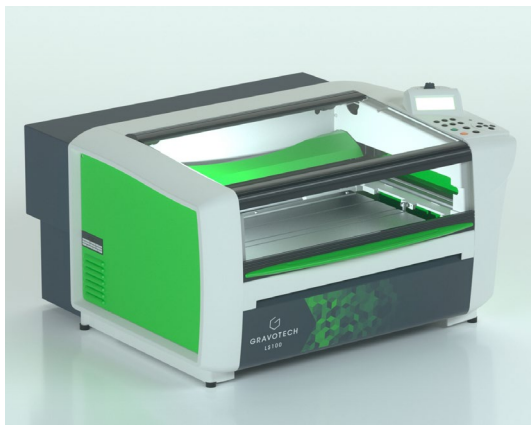


Dedicated And Multi-Technology Software

The LS100 is available with Gravostyle, our unique dedicated software: create and edit designs, vectorized logos and pictures, use specific fonts in every languages and alphabet, compose in Matrix mode.

This software is also an advanced piloting tool for your LS100.

This CO2 laser engraver can also be used with third party software.



Energy Version

The LS100 is the only premium gantry laser etching machine with this size.

It also exists in the Energy version, an alternative for first-time buyers or those on a reduced budget.

It uses a different laser source that ensures the same cutting quality but with a slight reduction in engraving quality.

This option is only available at Gravotech.

LEARN MORE ABOUT THE LS100



APPLICATIONS



Funeral plaques and headstones engraving



Engraving & laser cutting of custom ink stamps



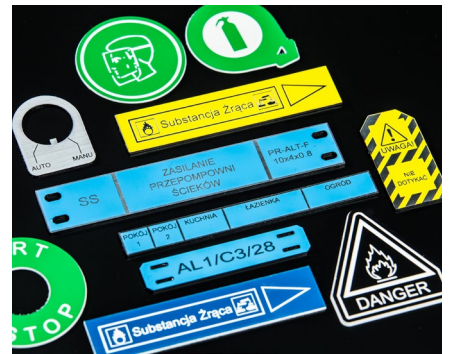
Pet and dog tags engraving



POP displays and sign engraving



Express Engraver



ID Tags

MATERIAL CHARACTERISTICS

Lens		1,5 IN.	2,0 IN.	2,5 IN.	3,5 IN.	4,0 IN.
Materials	Rubber Stamp	○	○	○		
	Paper & Cardboard	◄	◄	◄		
	Foam					◄
	Laser Engraving Material		◄	◄	◄	◄
	Glass	○	○	○	○	
	Anodized Aluminum		○	○	○	
	Acrylics & Derived	◄	◄	◄	◄	◄
	Wood, MDF	◄	◄	◄	◄	◄

cutting = ◄ engraving = ○

MAKE YOUR SAMPLES



SOFTWARE

GRAVOSTYLE™



Expert software made by engravers for engravers
Gravostyle™ is a professional engraving and cutting software that puts Gravotech engraving expertise in reach. Benefit from advanced possibilities and save time! Unique features available: Braille, Photostyle, Print & Cut, and more.

Complete engraving process mastered

Due to our history of making engraving machines, we have a full understanding of the engraving process. Gravostyle™ is fully compatible with all of our technologies. The software/machine interaction streamlines and improves your day-to-day engravings with functions like Point & Shoot.

Gravostyle™: unique software for laser and rotary

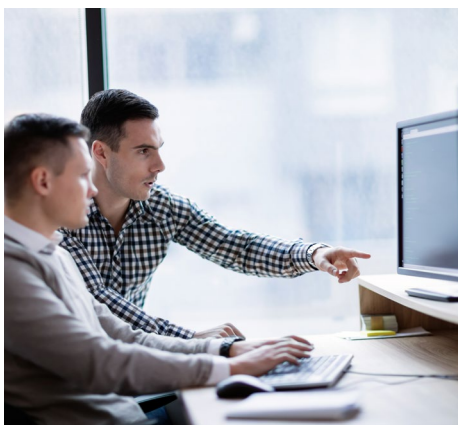
Are you already using Gravostyle™ on your rotary machine, and expanding your business with a laser? No need to learn how to use another software, switch in one click on the Gravostyle™ interface to set-up laser engraving!

SERVICE & SUPPORT



Training

Our training modules are designed to optimize your use of our solutions and are available for our full range of machines, software and accessories.



Technical Support

We bring you local support in your language in more than 50 countries, where we have established presence directly and with our distribution partners.



Maintenance

Thanks to experience gathered with Gravograph and Technifor and our global presence in more than 50 countries with 150 Gravotech technicians and our distributor partners, we can offer you a wide range of services.

TECHNICAL DATA

	LS100
Laser source	CO2
Available power version	25W - 40W - 60W
Available lenses	1.5" - 2.0" - 2.5" - 3.5" - 4.0"
Marking area max	460 x 305 mm (18 x 12 in)
Max object height	145 mm (5.7 in)
Max object weight	15 kg (33 lbs)
Machine dimensions (L x W x H)	775 x 725 x 450 mm (30.5 x 28.5 x 17.8 in)
Weight (kg)	43 kg (94.8 lbs)
Z axis auto	145 mm (5.7 in)
Noise (dB a)	≤ 70
Point & shoot	Yes
Operating temperature	10 °C (50 °F) - 35 °C (95 °F)
Connection to computer	USB
Maximum speed	2540 mm/s (100.000 in/s)
Classification	CDRH: Class 2
Beam diameter	0.1 mm (0,004 in) to 0.4mm (0,016 in)



sales@gravotech.com.au
+61 29 684 2400
www.gravotech.com.au

GRAVOTECH AUSTRALIA PTY LTD
Unit 1B, 23-29 South Street,
Rydalmere 2116, NSW, Australia

Follow us:

